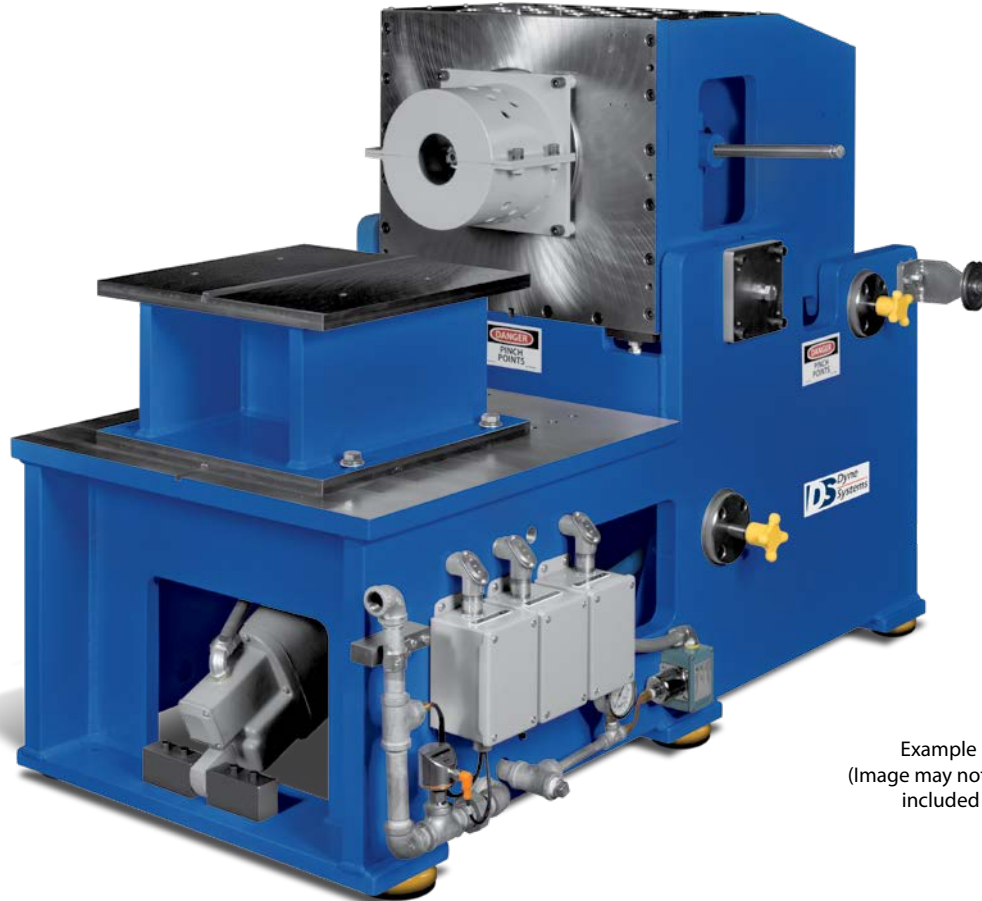


## Vertical - Horizontal Test Stand / Tables and Test Stands



Example Model Shown  
(Image may not depict all standard  
included components)

### V/H Test Stand

Vertical / Horizontal (V/H) Test Stands accommodate the testing of small engines and electric motors with both vertical and horizontal shaft orientations. Changing orientation of the dynamometer is accomplished via an electric actuator and the dynamometer can then be mechanically locked vertically or horizontally. The V/H Test Stand can be configured with a eddy current (absorbing) dynamometer or an AC (motoring and absorbing) dynamometer depending on the application.

### Standard Included Components

Load Cell and Linkage  
Cooling Safety Package  
Calibration Arm, Pulley Assembly and Weight Hanger  
Horizontal Shaft Guard  
Magnetic Pickup and 60-tooth Gear  
Vibration Isolation Feet

### Recommended Accessories

- Horizontal Engine Fixture Assembly
- Vertical Engine Fixture Assembly
- Calibration Weights
- Electric Starter Assembly
- Driveline Components, Adapters and Flanges

***Everything you need to succeed***

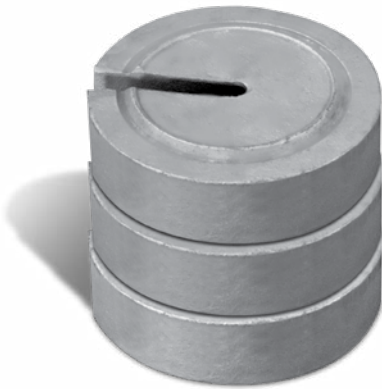
# Optional Accessories



Horizontal Engine  
Fixture Assembly



Vertical Engine  
Fixture Assembly



Calibration  
Weights



Electric Starter  
Assembly

---

# Various Facility Support Systems and Services Available



Bulk Fuel Storage  
and Distribution



Coolant Storage  
and Distribution



Water  
Recirculation

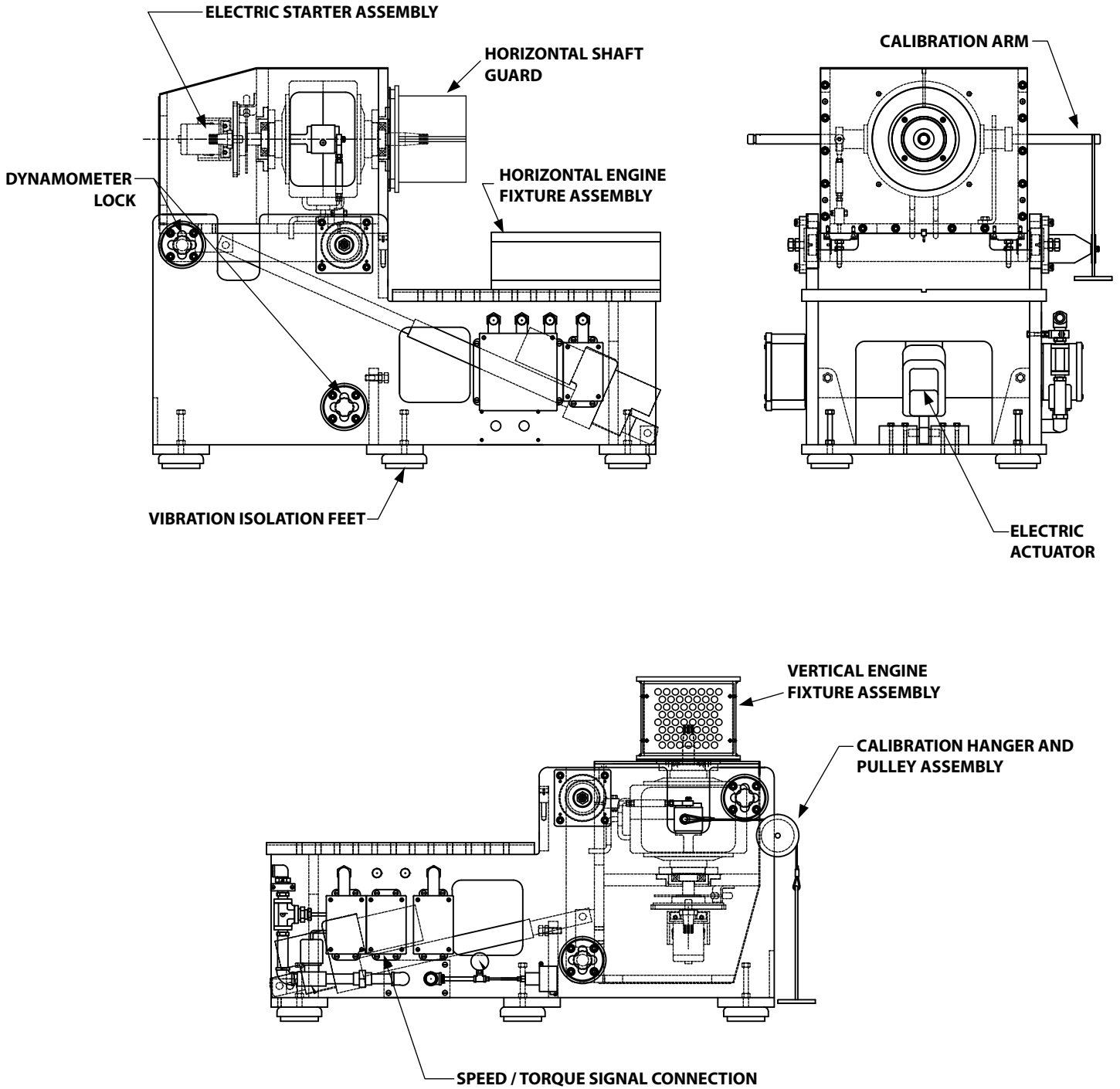


Design, Project  
& Construction  
Management Services



Commissioning,  
Start-up & Training

NOTE: Diagrams depicts an eddy current absorber



*Everything you need to succeed*



Dyne Systems is a division of Taylor Dynamometer  
(414) 755-0040 [www.dynesystems.com](http://www.dynesystems.com)

DS9650v002