



Air Handling System / Facility Support System

Dyne Systems designs custom ventilation systems for dynamometer test cells to include test cell temperature and pressure control. Under typical operating conditions, the room temperature can be maintained to within 20°F (-7°C) of the outside ambient conditions.

Custom Ventilation Systems include:

- Fans, heaters, hoods and dampers (as required to operate system)
- Multi-function control system that enables:
 - Standard operation
 - Remote operation for connection to Data Acquisition & Control System or a Test Cell Command Center
 - Purge mode used to vent the room of smoke or fumes in the event of an engine or accessory failure
- Motor starters and/or drives for the supplied equipment
- Layout design for the mechanical contractor to build and install ductwork (ductwork not included)
- Optional exhaust hood or direct capture exhaust system (purchased separately)

Dyne Systems' Air Handling (HVAC) Systems consist of two basic configurations:

Direct Capture Exhaust System Configuration

The ventilation system will use a recirculation configuration that mixes the warm air with outside air to control room temperature and pressure.

Exhaust Hood Configuration

A makeup air heater may be employed to control the room temperature during engine/vehicle warm-up and cool down.

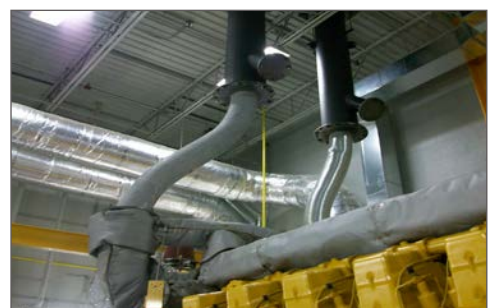
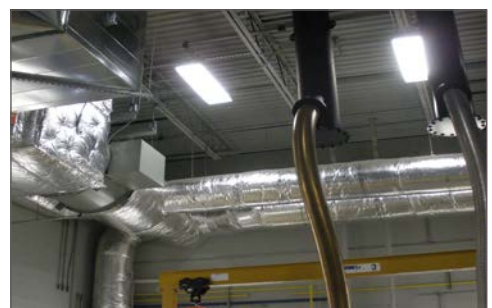
Information needed for pricing systems:

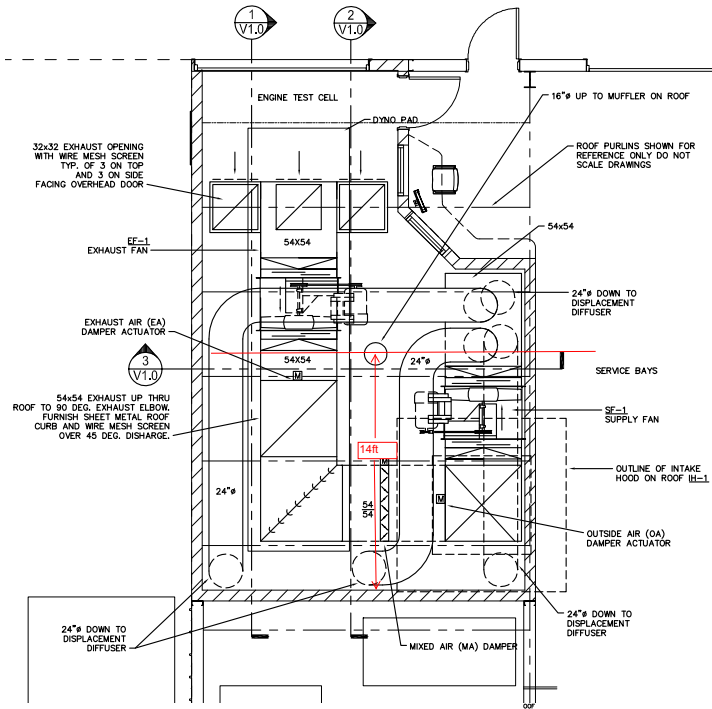
- AC electrical voltage and frequency
- Test cell volume (cubic feet/cubic meters) or overall interior dimensions
- Nearest major city to proposed facility installation (for ambient conditions)
- Maximum engine size (displacement and the exterior envelope)
- Available access points to the outside (roof penetration, two roof penetrations, one or two outside walls for penetration, etc.)

To complete the design after purchase, the above information will be required as well as building floor and structural plans.

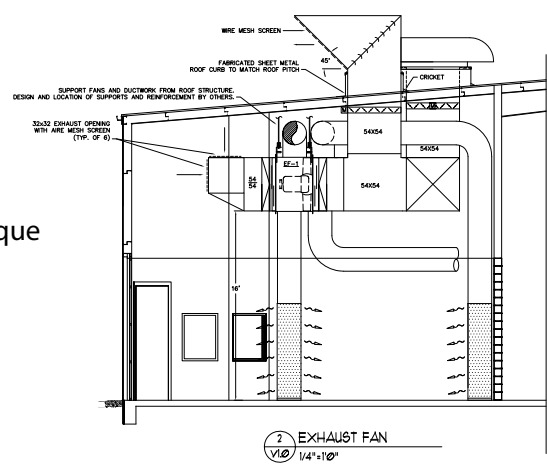
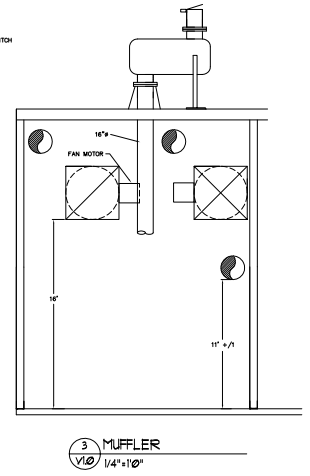
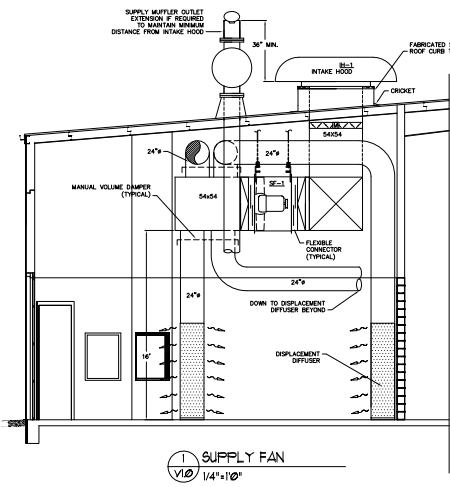


HVAC Controller





FOR NOT



SUPPLY FAN SCHEDULE	
UNIT TAG	SE-1
SERVES	TEST CELL
MAKE	GREENHECK
MODEL NO.	TB-FS-3.54-150
SPW	45,000
SP T/C	0.75
ELECTRICAL	460/80/3
HP	15
FRW	837

EXHAUST FAN SCHEDULE	
UNIT TAG	EF-1
SERVES	TEST CELL
MAKE	GREENHECK
MODEL NO.	TB-FS-3.54-150
SPW	45,000
SP T/C	0.75
ELECTRICAL	460/80/3
HP	15
FRW	837

OPTIONS AND ACCESSORIES:
 UNIVERSAL MOUNTING BRACKETS
 MOTOR SERVICE FACTOR 1.15 OR GREATER
 CLASS B MOTOR INSULATION OR GREATER
 DRIVE SERVICE FACTOR - 1.5
 BELT GUARD
 ISOLATING HANDING, NEPRENE DIRECT MOUNT
 MOUNTING RAILS
 MOTOR LABELED FOR USE W/ VFD
 MOTOR MEETS EPACT AND NEMA 12/10

Note: The drawings are for example only. Each Air Handling (HVAC) Systems is unique according to room requirements and dynamometer specifications.

Everything you need to succeed



Dyne Systems is a division of Taylor Dynamometer
 (414) 755-0040 www.dynesystems.com

DS8500V002