



Air Handling System / Facility Support System

Dyne Systems designs custom ventilation systems for dynamometer test cells to include test cell temperature and pressure control. Under typical operating conditions, the room temperature can be maintained to within 20°F (-7°C) of the outside ambient conditions.

Custom Ventilation Systems include:

- Fans, heaters, hoods and dampers (as required to operate system)
- Multi-function control system that enables:
 - Standard operation
 - Remote operation for connection to Data Acquisition & Control System or a Test Cell Command Center
 - Purge mode used to vent the room of smoke or fumes in the event of an engine or accessory failure
- Motor starters and/or drives for the supplied equipment
- Layout design for the mechanical contractor to build and install ductwork (ductwork not included)
- Optional exhaust hood or direct capture exhaust system (purchased separately)

Dyne Systems' Air Handling (HVAC) Systems consist of two basic configurations:

Direct Capture Exhaust System Configuration

The ventilation system will use a recirculation configuration that mixes the warm air with outside air to control room temperature and pressure.

Exhaust Hood Configuration

A makeup air heater may be employed to control the room temperature during engine/vehicle warm-up and cool down.

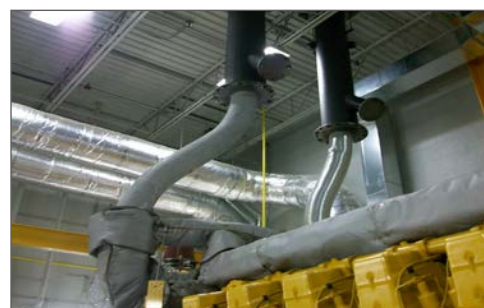
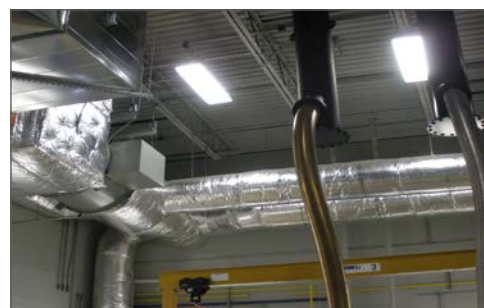
Information needed for pricing systems:

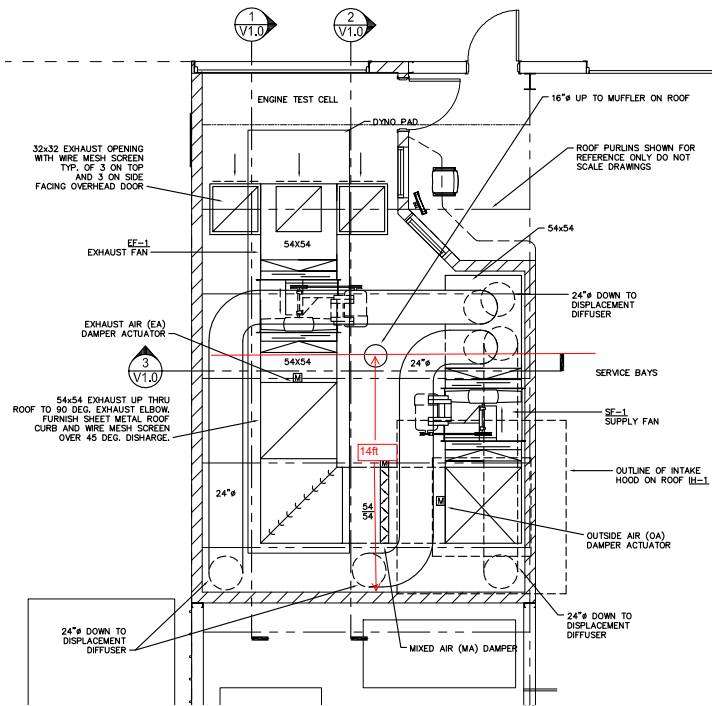
- AC electrical voltage and frequency
- Test cell volume (cubic feet/cubic meters) or overall interior dimensions
- Nearest major city to proposed facility installation (for ambient conditions)
- Maximum engine size (displacement and the exterior envelope)
- Available access points to the outside (roof penetration, two roof penetrations, one or two outside walls for penetration, etc.)

To complete the design after purchase, the above information will be required as well as building floor and structural plans.

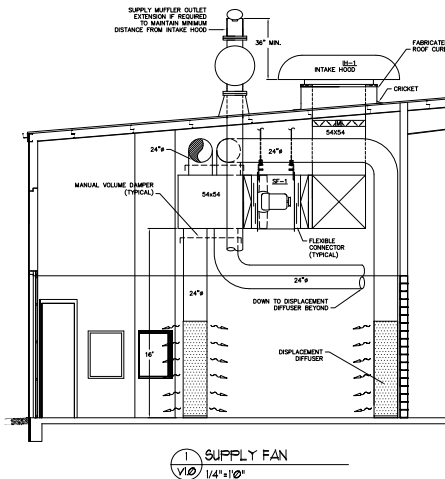


HVAC Controller

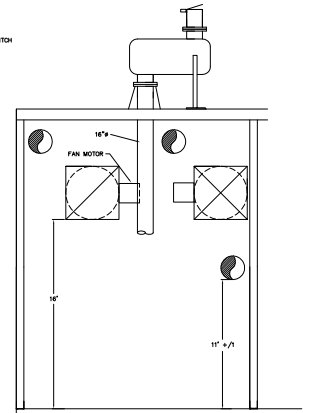




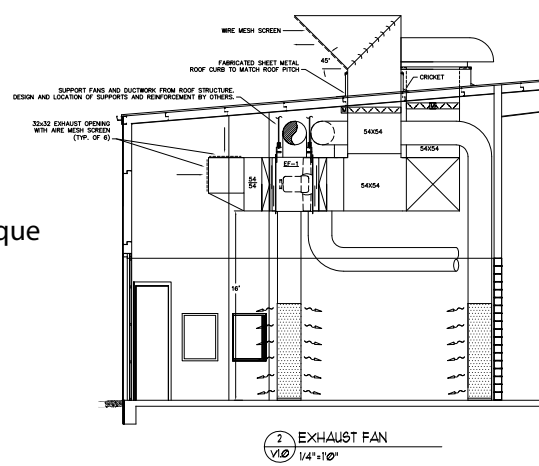
FOR NOT



1 SUPPLY FAN
V10 1/4"=1'0"



3 MUFFLER
V10 1/4"=1'0"



2 EXHAUST FAN
V10 1/4"=1'0"

Note: The drawings are for example only. Each Air Handling (HVAC) Systems is unique according to room requirements and dynamometer specifications.

SUPPLY FAN SCHEDULE	
UNIT TAG	SE-1
SERIES	TEST CELL
NAME	GREENBCK
MODEL NO.	TB-PS-3.54-150
SPW	45,000
SP T/C	0.75
ELECTRICAL	460/80/3
HP	15
FRW	807

EXHAUST FAN SCHEDULE	
UNIT TAG	EF-1
SERIES	TEST CELL
NAME	GREENBCK
MODEL NO.	TB-PS-3.54-150
SPW	45,000
SP T/C	0.75
ELECTRICAL	460/80/3
HP	15
FRW	807

OPTIONS AND ACCESSORIES:
UNIVERSAL MOUNTING BRACKETS
MOTOR SERVICE FACTOR 1.15 OR GREATER
CLASS B MOTOR INSULATION OR GREATER
DRIVE SERVICE FACTOR - 1.5
BELT GUARD
ISOLATING HANDING, NEPRENE DIRECT MOUNT
MOUNTING RAILS
MOTOR LABELED FOR USE W/ VFD
MOTOR MEETS EPACT AND NEMA 1210

OPTIONS AND ACCESSORIES:
UNIVERSAL MOUNTING BRACKETS
MOTOR SERVICE FACTOR 1.15 OR GREATER
CLASS B MOTOR INSULATION OR GREATER
DRIVE SERVICE FACTOR - 1.5
BELT GUARD
ISOLATING HANDING, NEPRENE DIRECT MOUNT
MOUNTING RAILS
MOTOR LABELED FOR USE W/ VFD
MOTOR MEETS EPACT AND NEMA 1210



Dyne Systems is a division of Taylor Dynamometer
W209 N17391 Industrial Dr., Jackson, WI 53037
(800) 657-0726 www.dynesystems.com

Everything you need to succeed