



Modular Test Cell up to 500 hp



Inside dimensions

15 ft, 4 in. wide x 17 ft, 4 in. deep x 12 ft high
(4.7 m wide x 5.3 m deep x 3.7 m high)

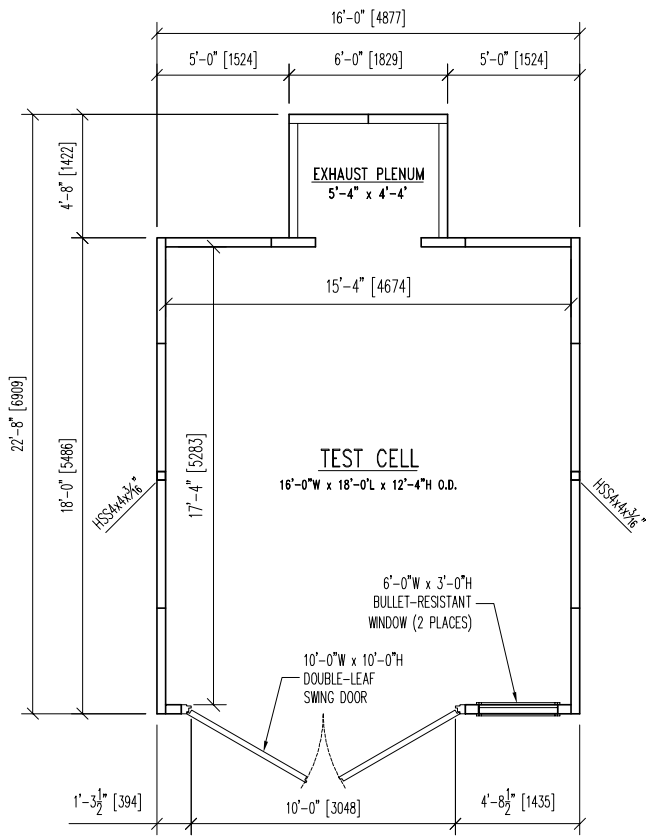
Outside dimensions

16 ft wide x 18 ft deep x 12 ft, 4 in. high
(4.9 m wide x 5.5 m deep x 3.8 m high)
(not including exhaust plenum)

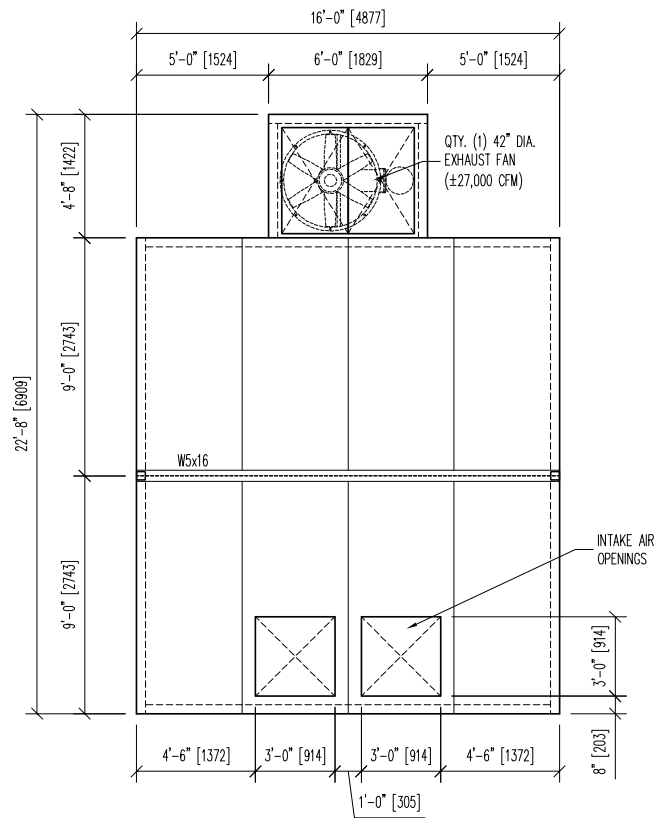
Modular, Sound Attenuating Engine Test Cell up to 500 hp

- All doors, walls and windows STC 50 rated
- All ceiling panels STC 42 rated (unless otherwise specified)
- Maximum roof load 34 lb-ft² (166 kg-m²) (not designed for storage but can support men walking on it)
- Exhaust plenum STC 42 rated panels with specified exhaust fan
- Walls and ceiling are paint-ready A-60 galvalume steel
- A 42 in. (1.1 m) fan, 27,000 cfm at 0.250 in. i.w.g. 460V, 3-phase to maintain approximately 20° Δ T
- Two (2) bullet-resistant windows 3 x 3 ft (0.91 x 0.91 m)
- Double leaf, swing door STC 48 rated 10 ft wide x 10 ft high (3 m wide x 3 m high)
- Estimated shipping weight is 14,000 lb (6,350 kg)
- Installation drawings are provided
- Installation service available upon request

Everything you need to succeed



500 HP ENGINE TEST CELL - FLOOR PLAN



500 HP ENGINE TEST CELL - ROOF PLAN

Everything you need to succeed



Dyne Systems is a division of Taylor Dynamometer
 W209 N17391 Industrial Dr., Jackson, WI 53037
 (800) 657-0726 www.dynesystems.com

DS7900v001