



DA16HS / Engine Dynamometer

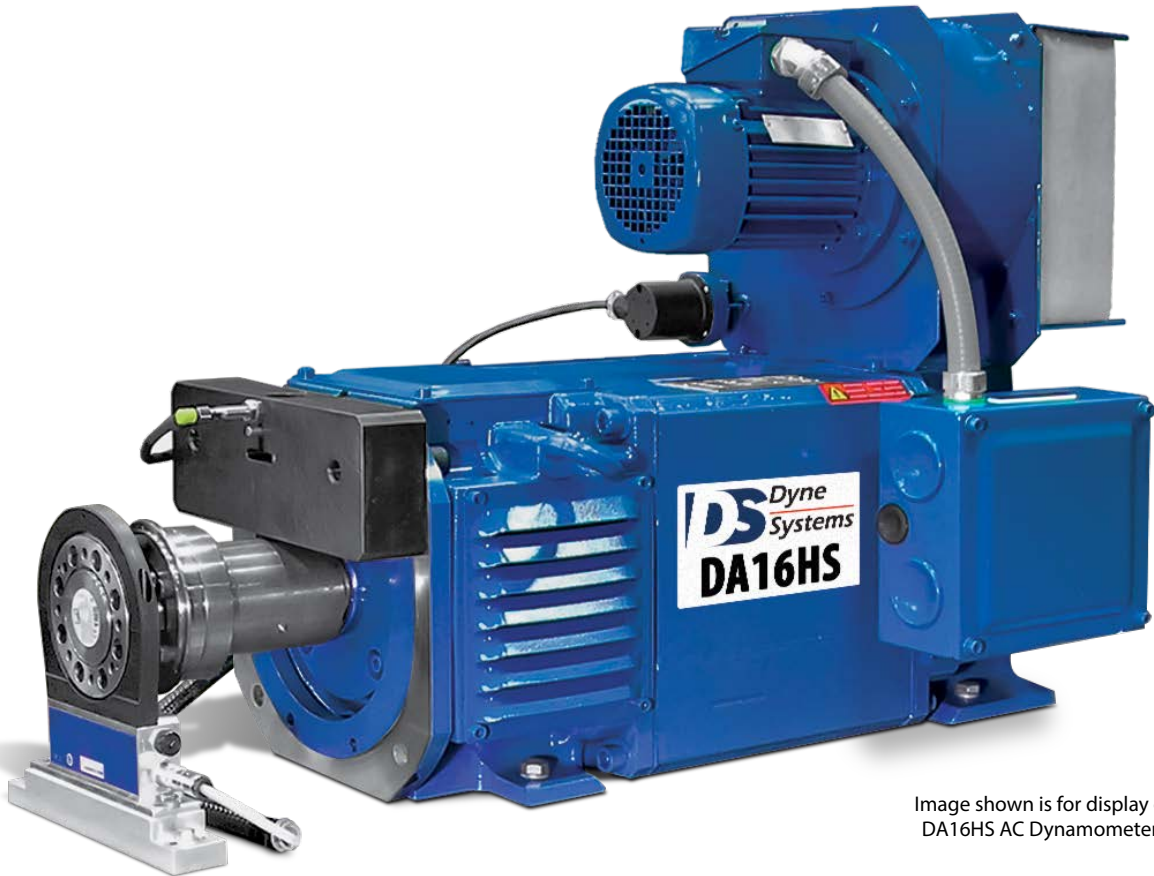


Image shown is for display only, actual DA16HS AC Dynamometer may vary.

DA16HS Air Cooled AC Dynamometer

Specifications

Power:	16 hp (11.9 kW)
Torque:	42 lb-ft (56.9 Nm)
Maximum Speed:	11,000 rpm
Constant Torque Range:	0 - 2,000 rpm
Constant Power Range:	2,000 - 3,200 rpm
Decreasing Power Range:	3,200 - 11,000 rpm
Rotation:	bi-directional

Recommended Accessories

- Test Stand or Table
- Driveshaft
- Shaft Guard
- Adapter Plate Kit
- Load Bank Configuration (Regenerative Drive Configuration is standard)
- Calibration Weights

For overhung loads, such as a belt or gear drive, please contact Dyne Systems to ensure that the system will meet the required performance needs.

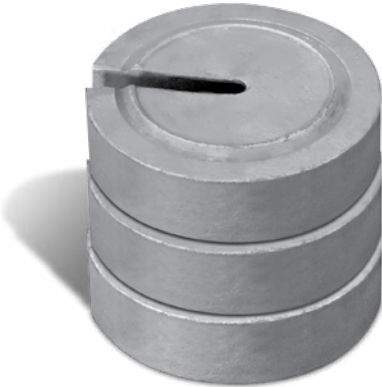
As a safety precaution, Dyne Systems recommends a torsional analysis to uncover any potential torsional problems that exist for each application. This analysis will identify any torsional issues (frequencies) that should be fixed prior to operation. Excessive linear vibration may also create problems that must be mitigated for continued operation. It is the customer's responsibility to ensure that these vibration issues are addressed upon application of the dynamometer. Equipment failures attributed to linear or torsional vibration are not warrantable.

Everything you need to succeed

Optional Accessories



Optional T-Slot Table



Optional Calibration Weights



Optional Driveshaft Guard

Various Facility Support Systems and Services Available



Bulk Fuel Storage and Distribution



Coolant Storage and Distribution



Water Recirculation

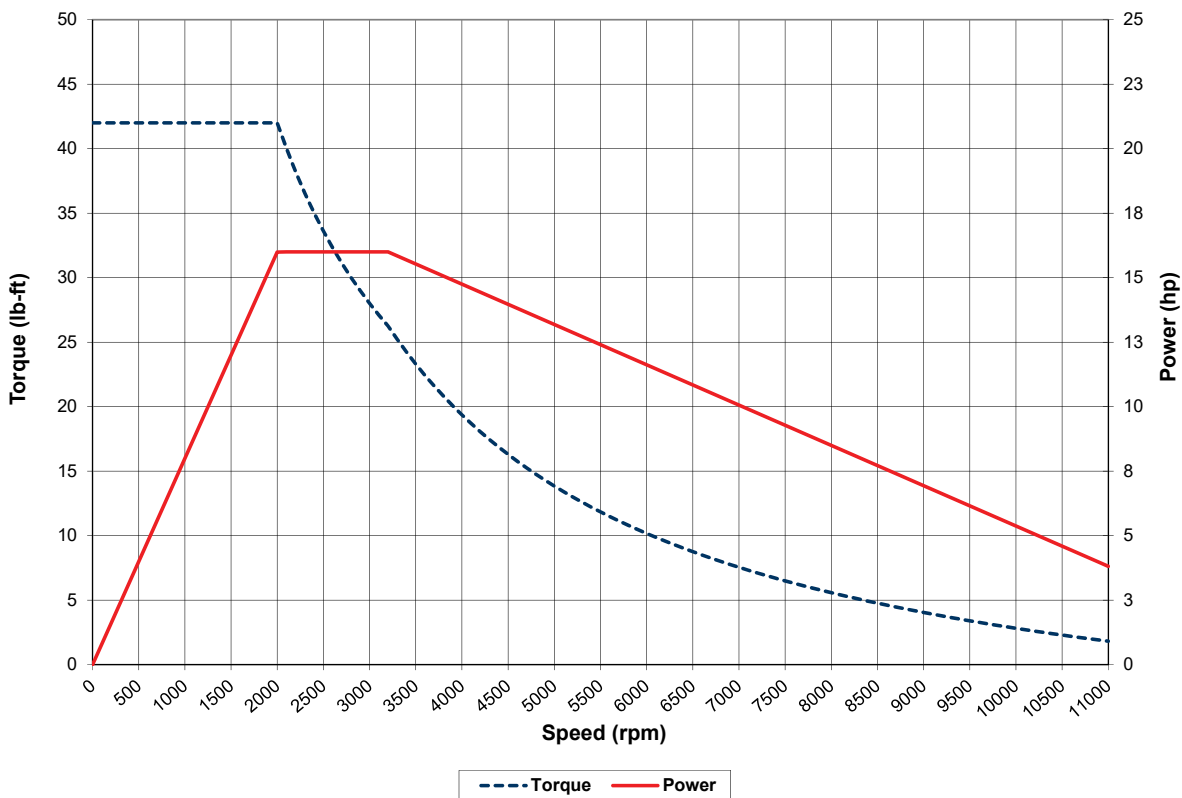


Design, Project & Construction Management Services

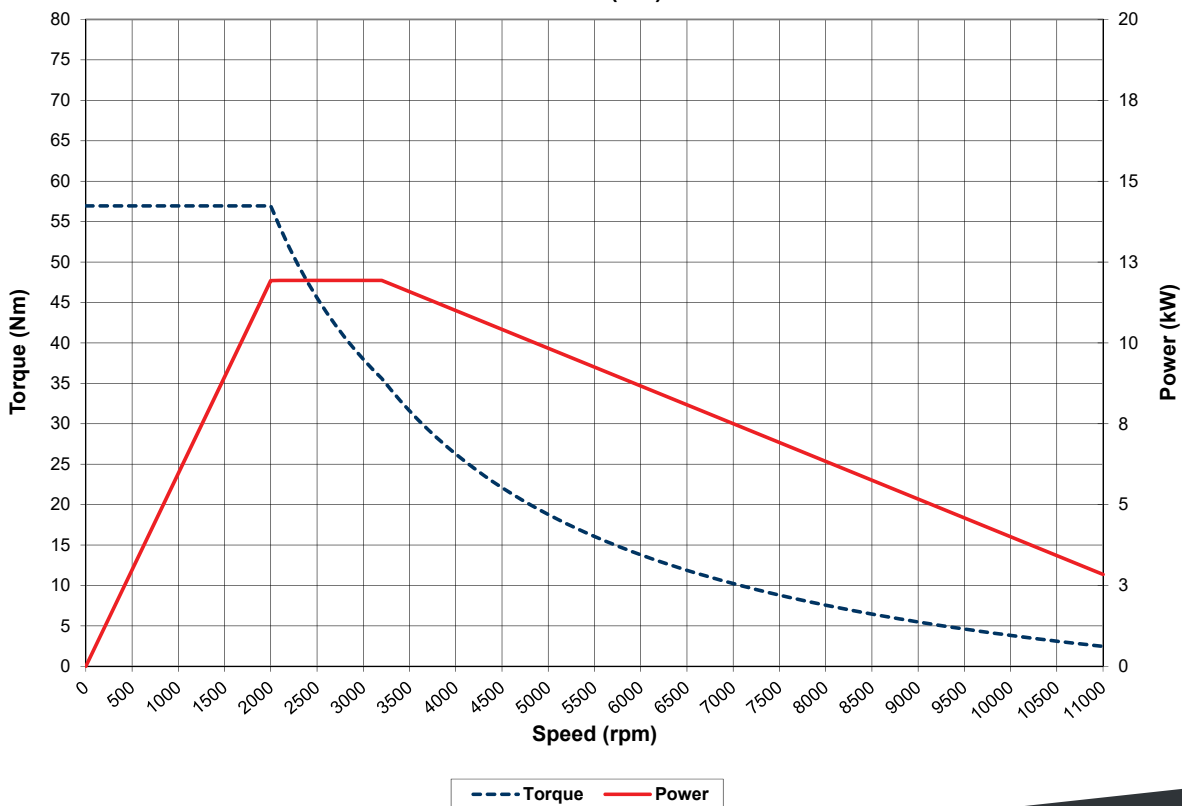


Commissioning, Start-up & Training

DA16HS (US Customary)



DA16HS (S.I.)



Everything you need to succeed



Dyne Systems is a division of Taylor Dynamometer
 W209 N17391 Industrial Dr., Jackson, WI 53037
 (800) 657-0726 www.dynesystems.com