



Vertical - Horizontal Test Stand / Tables and Test Stands



Example Model Shown
(Image may not depict all standard
included components)

V/H Test Stand

Vertical / Horizontal (V/H) Test Stands accommodate the testing of small engines and electric motors with both vertical and horizontal shaft orientations. Changing orientation of the dynamometer is accomplished via an electric actuator and the dynamometer can then be mechanically locked vertically or horizontally. The V/H Test Stand can be configured with a eddy current (absorbing) dynamometer or an AC (motoring and absorbing) dynamometer depending on the application.

Standard Included Components

- Load Cell and Linkage
- Cooling Safety Package
- Calibration Arm, Pulley Assembly and Weight Hanger
- Horizontal Shaft Guard
- Magnetic Pickup and 60-tooth Gear
- Vibration Isolation Feet

Recommended Accessories

- Horizontal Engine Fixture Assembly
- Vertical Engine Fixture Assembly
- Calibration Weights
- Electric Starter Assembly
- Driveline Components, Adapters and Flanges

Everything you need to succeed

Optional Accessories



Horizontal Engine
Fixture Assembly



Vertical Engine
Fixture Assembly



Calibration
Weights



Electric Starter
Assembly

Various Facility Support Systems and Services Available



Bulk Fuel Storage
and Distribution



Coolant Storage
and Distribution



Water
Recirculation

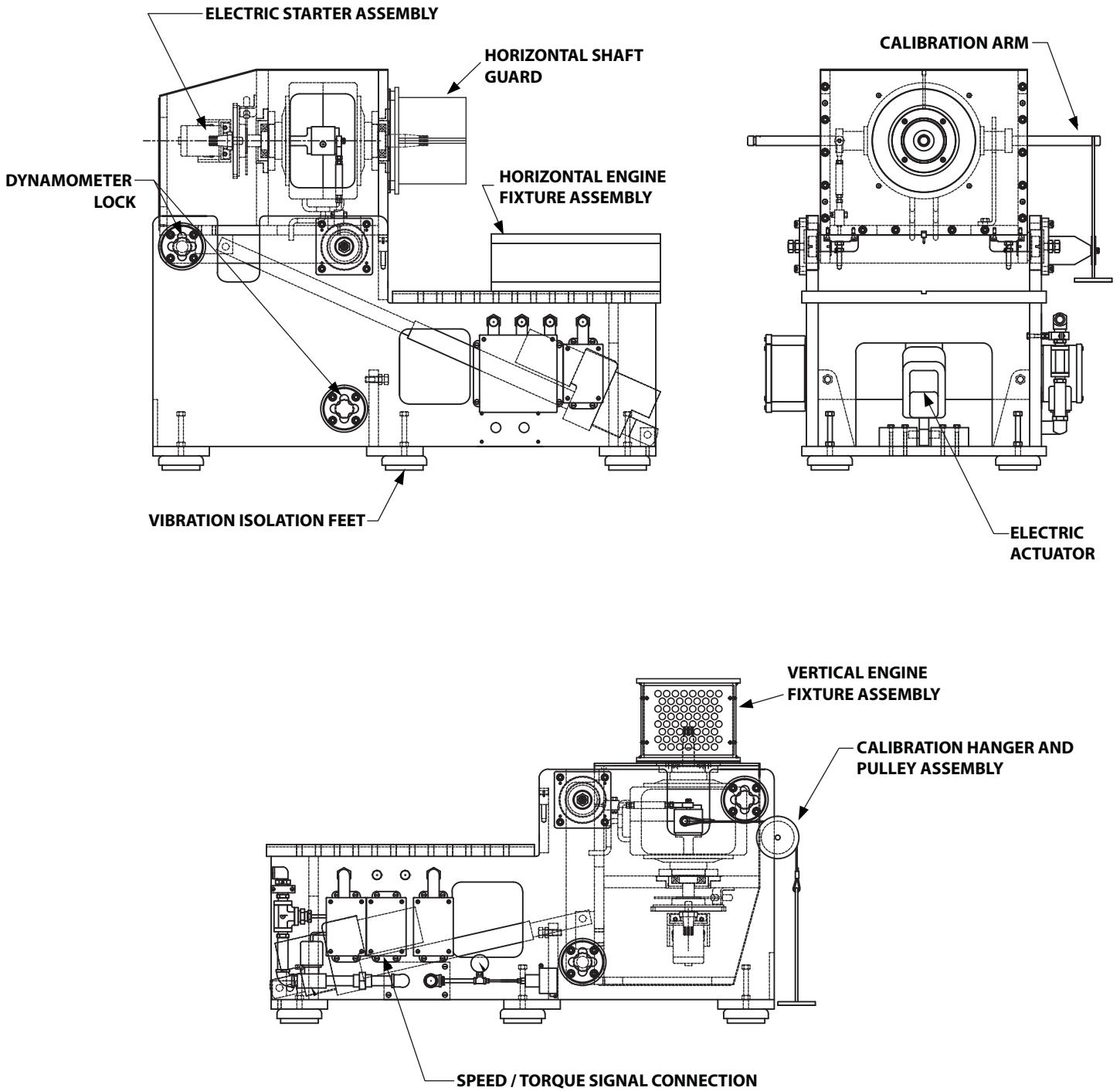


Design, Project
& Construction
Management Services



Commissioning,
Start-up & Training

NOTE: Diagrams depicts an eddy current absorber



Everything you need to succeed



Dyne Systems is a division of Taylor Dynamometer
W209 N17391 Industrial Dr., Jackson, WI 53037
(800) 657-0726 www.dynesystems.com

DS9650v001