



## Modular Test Cell up to 2,500 hp



### Inside dimensions

19 ft, 4 in. wide x 39 ft, 4 in. deep x 14 ft high  
(5.9 m wide x 12 m deep x 4.3 m high)

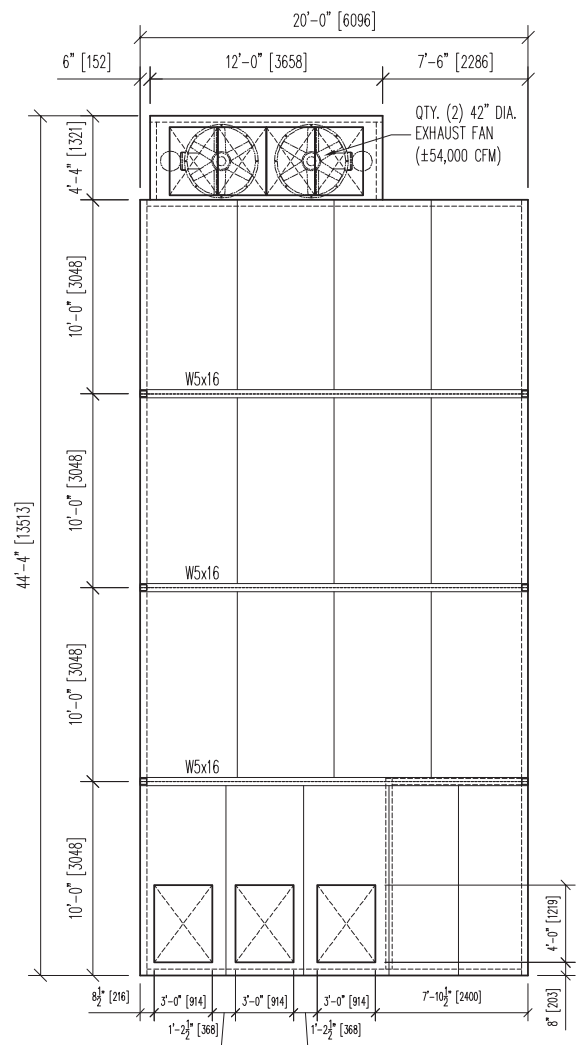
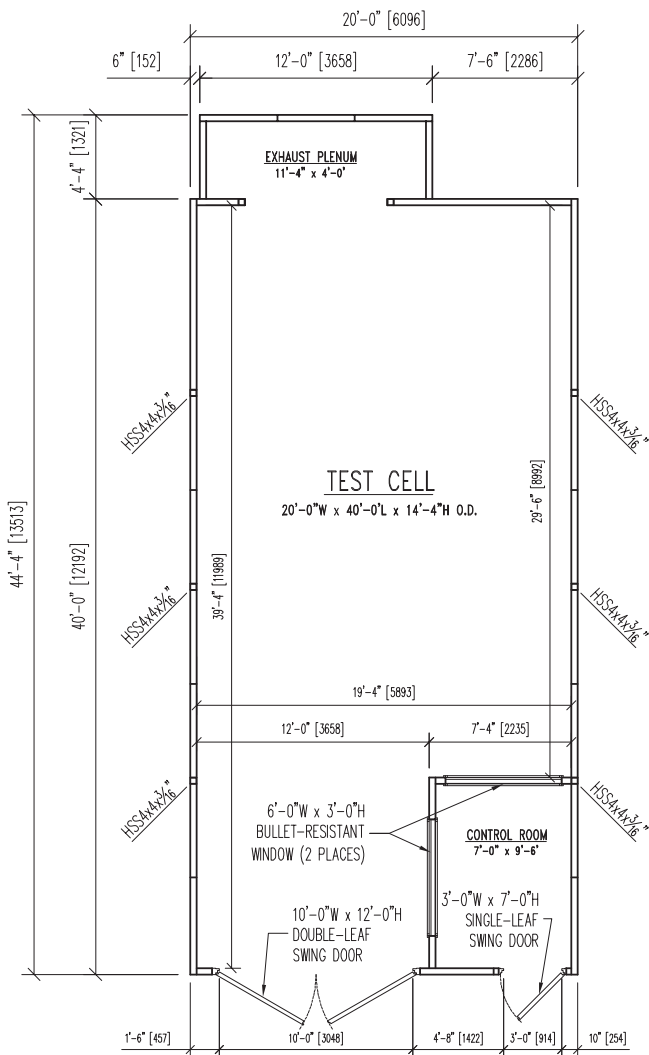
### Outside dimensions

20 ft wide x 40 ft deep x 14 ft, 4 in. high  
(6.1 m wide x 12.1 m deep x 4.4 m high)  
(not including exhaust plenum)

## Modular, Sound Attenuating Engine Test Cell up to 2,500 hp

- All doors, walls and windows STC 50 rated
- All ceiling panels STC 42 rated (unless otherwise specified)
- Maximum roof load 34 lb-ft<sup>2</sup> (166 kg-m<sup>2</sup>) (not designed for storage but can support men walking on it)
- Exhaust plenum STC 42 rated panels with specified exhaust fan
- Walls and ceiling are paint-ready, A-60 galvanized steel
- Two (2) 42 in. (1.1 m) fans, 27,000 cfm at 0.250 in. i.w.g., 460V, 3-phase to maintain approximately 20° Δ T
- Two (2) bullet-resistant windows, 6 x 3 ft (1.8 x 0.91 m)
- Internal control room 10 ft long x 7 ft wide (3 m long x 2.1 m wide) with 3 x 7 ft (0.91 x 2.1 m) man door
- Double leaf, swing door STC 48 rated, 10 ft wide x 12 ft high (3 m wide x 3.7 m high)
- Estimated shipping weight is 33,000 lb (14,969 kg)
- Installation drawings are provided
- Installation service available upon request

**Everything you need to succeed**



2,500HP ENGINE TEST CELL - FLOOR PLAN

2,500HP ENGINE TEST CELL - ROOF PLAN

Everything you need to succeed



Dyne Systems is a division of Taylor Dynamometer  
 W209 N17391 Industrial Dr., Jackson, WI 53037  
 (800) 657-0726 [www.dynesystems.com](http://www.dynesystems.com)

DS7902v001